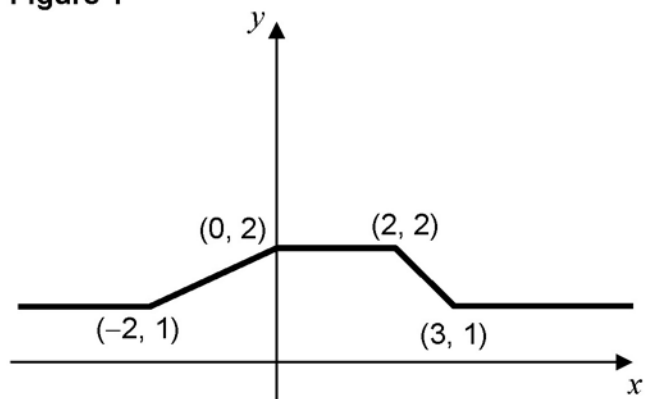


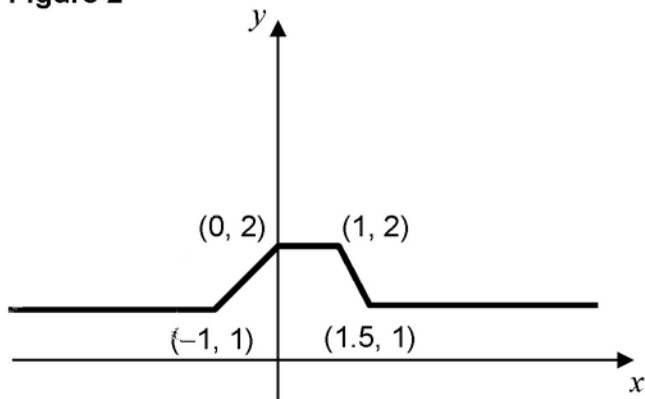
2 The graph of $y = f(x)$ is shown in **Figure 1**.

Figure 1



State the equation of the graph shown in **Figure 2**.

Figure 2



Circle your answer.

[1 mark]

$y = f(2x)$

$y = f\left(\frac{x}{2}\right)$

$y = 2f(x)$

$y = \frac{1}{2}f(x)$