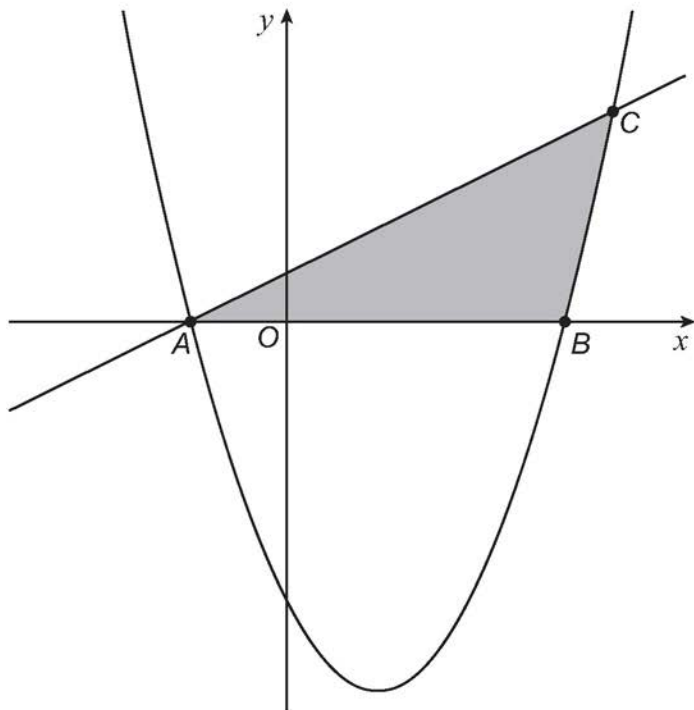


9

The diagram below shows the graphs of $y = x^2 - 4x - 12$ and $y = x + 2$



9 (a) Write down three inequalities which together describe the shaded region.

[2 marks]

9 (b) Find the coordinates of the points A , B and C .

[4 marks]

9 (c) Find the exact area of the shaded region.

Fully justify your answer.

[6 marks]