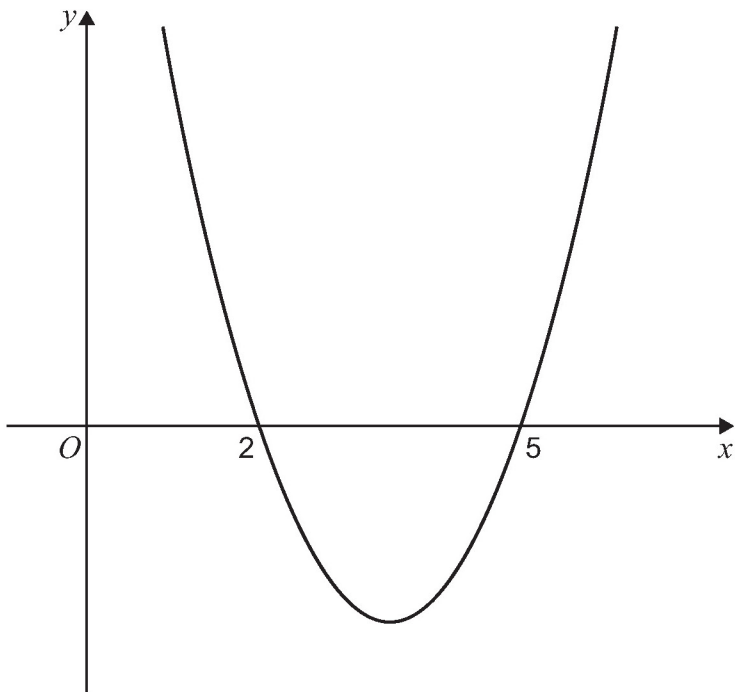


1

The graph of $y = ax^2 + bx + c$ has roots $x = 2$ and $x = 5$, as shown in the diagram below.



State the set of values of x which satisfy

$$ax^2 + bx + c > 0$$

Tick (✓) **one** box.

$\{x : x < 2\} \cup \{x : x > 5\}$

$\{x : 0 < x < 2\} \cap \{x : x > 5\}$

$\{x : 2 < x < 5\}$

$\{x : 2 > x > 5\}$

[1 mark]