

3.

In this question you must show all stages of your working.

Solutions relying entirely on calculator technology are not acceptable.

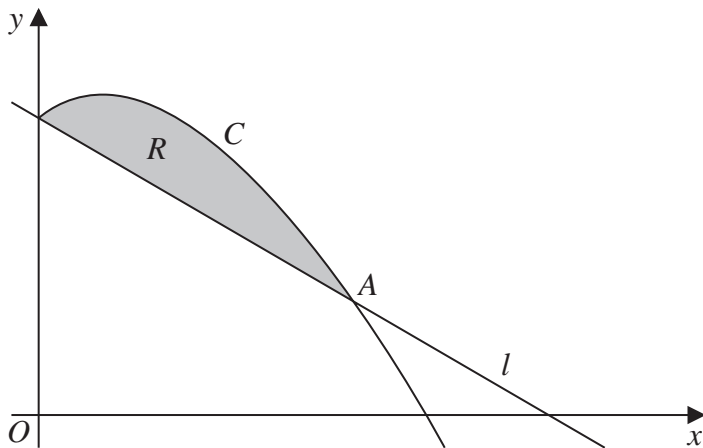


Figure 2

Figure 2 shows a sketch of part of the curve C with equation $y = 4x - 3x^{\frac{3}{2}} + 13$ and the line l with equation $y = 13 - 2x$

(a) Verify that the line and the curve intersect at the point $A(4, 5)$

(2)

The region R , shown shaded in Figure 2, is bounded by C and l

(b) Find the area of R

(4)