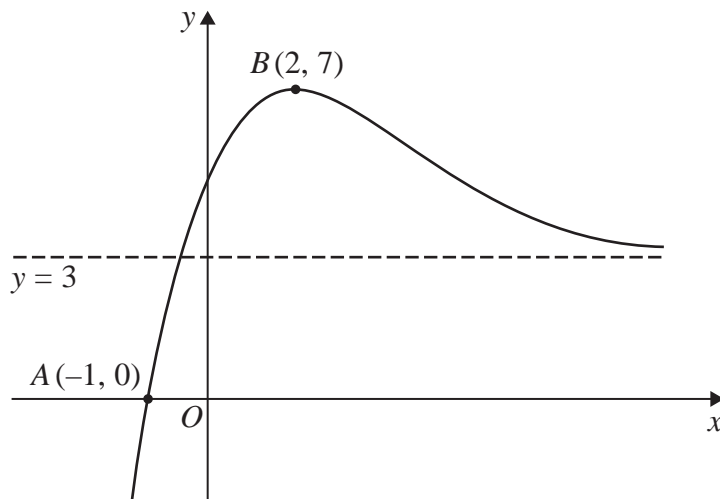


1.



**Figure 1**

Figure 1 shows a curve with equation  $y = f(x)$

The curve

- passes through the point  $A(-1, 0)$
- has a maximum turning point at  $B(2, 7)$
- has a horizontal asymptote with equation  $y = 3$

On separate diagrams, sketch the curve with equation

(i)  $y = f(x + 2)$

**(3)**

(ii)  $y = -f(x)$

**(3)**

On each diagram, show clearly the coordinates of the points to which  $A$  and  $B$  are transformed and the equation of the asymptote.