

11.

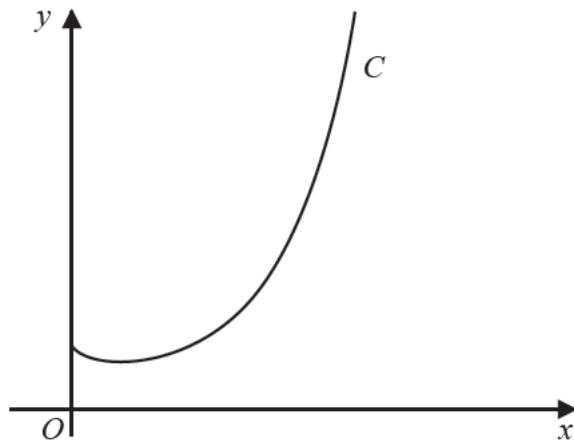


Figure 8

Figure 8 shows a sketch of the curve  $C$  with equation  $y = x^x$ ,  $x > 0$

- (a) Find, by firstly taking logarithms, the  $x$  coordinate of the turning point of  $C$ .  
*(Solutions based entirely on graphical or numerical methods are not acceptable.)*

(5)

The point  $P(\alpha, 2)$  lies on  $C$ .

- (b) Show that  $1.5 < \alpha < 1.6$

(2)

A possible iteration formula that could be used in an attempt to find  $\alpha$  is

$$x_{n+1} = 2x_n^{1-x_n}$$

Using this formula with  $x_1 = 1.5$

- (c) find  $x_4$  to 3 decimal places,
- (d) describe the long-term behaviour of  $x_n$

(2)

(2)