

7.

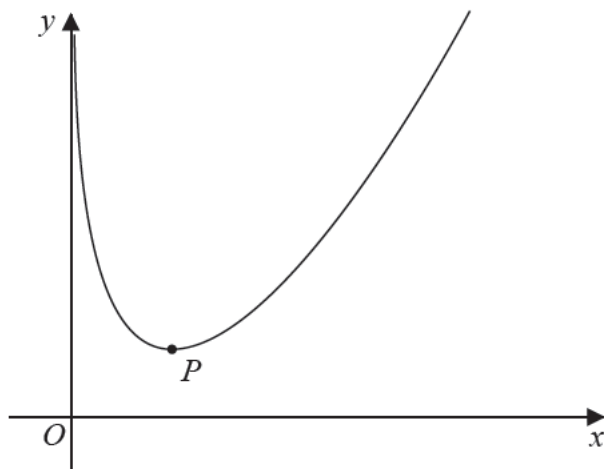


Figure 1

Figure 1 shows a sketch of the curve C with equation

$$y = \frac{4x^2 + x}{2\sqrt{x}} - 4\ln x \quad x > 0$$

(a) Show that

$$\frac{dy}{dx} = \frac{12x^2 + x - 16\sqrt{x}}{4x\sqrt{x}}$$

(4)

The point P , shown in Figure 1, is the minimum turning point on C .

(b) Show that the x coordinate of P is a solution of

$$x = \left(\frac{4}{3} - \frac{\sqrt{x}}{12} \right)^{\frac{2}{3}}$$

(3)

(c) Use the iteration formula

$$x_{n+1} = \left(\frac{4}{3} - \frac{\sqrt{x_n}}{12} \right)^{\frac{2}{3}} \quad \text{with } x_1 = 2$$

to find (i) the value of x_2 to 5 decimal places,

(ii) the x coordinate of P to 5 decimal places.

(3)