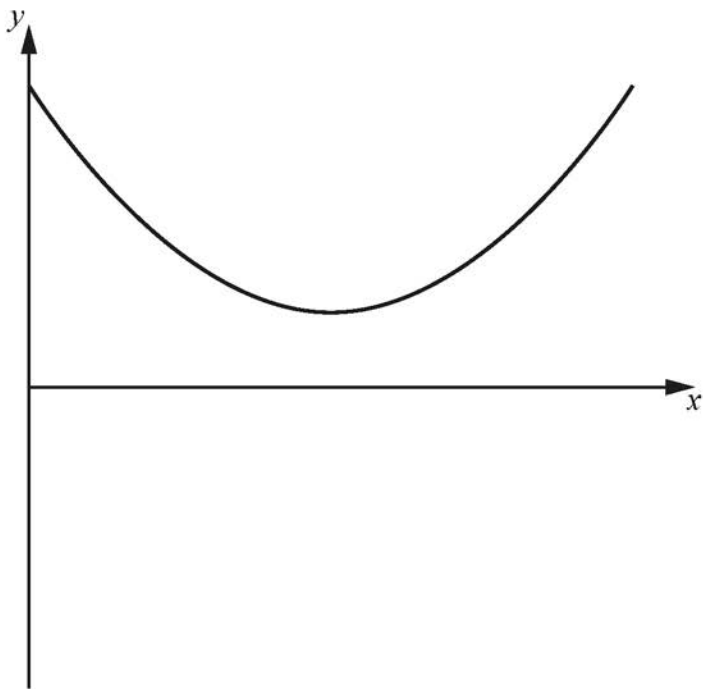


3 The diagram shows the graph of $y = f(x)$, where $f(x)$ is a **quadratic** function of x .

A copy of the diagram is given in the Printed Answer Booklet.



(a) On the copy of the diagram in the Printed Answer Booklet, draw a possible graph of the gradient function $y = f'(x)$.

[3]

(b) State the gradient of the graph of $y = f''(x)$.

[1]