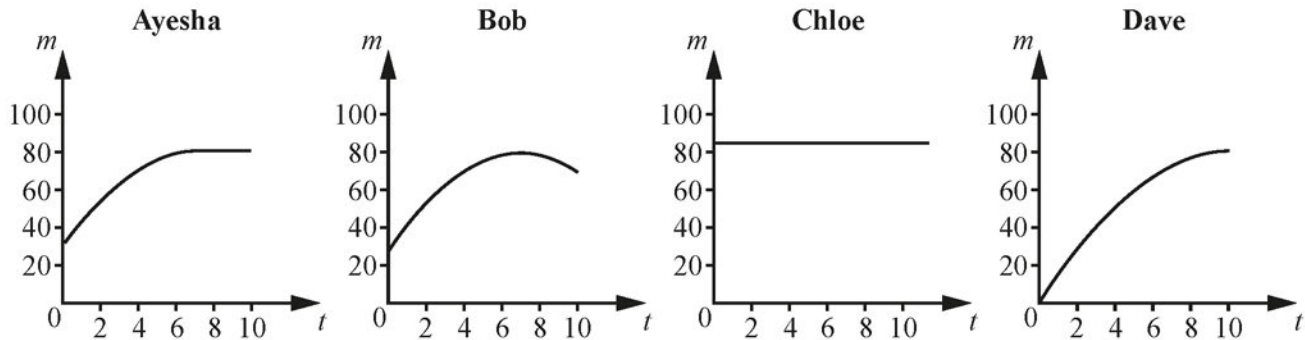


- 3 Ayesha, Bob, Chloe and Dave are discussing the relationship between the time,  $t$  hours, they might spend revising for an examination, and the mark,  $m$ , they would expect to gain. Each of them draws a graph to model this relationship for himself or herself.



- (i) Assuming Ayesha's model is correct, how long would you recommend that she spends revising? [1]
- (ii) State one feature of Dave's model that is likely to be unrealistic. [1]
- (iii) Suggest a reason for the shape of Bob's graph as compared with Ayesha's graph. [1]
- (iv) What does Chloe's model suggest about her attitude to revision? [1]