

4 Fig. 4 shows the graph of $y = \sqrt{1+x^3}$.

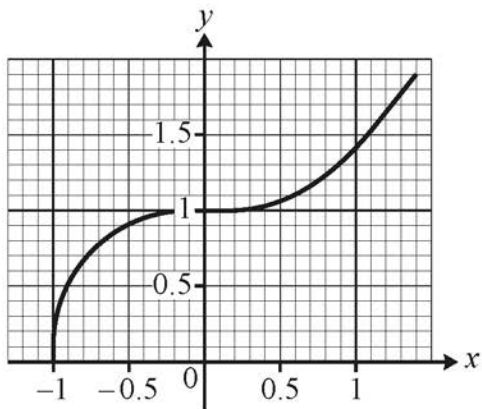


Fig. 4

- (a) Use the trapezium rule with $h = 0.5$ to find an estimate of $\int_{-1}^0 \sqrt{1+x^3} dx$, giving your answer correct to 6 decimal places. **[3]**
- (b) State whether your answer to part (a) is an under-estimate or an over-estimate, justifying your answer. **[1]**