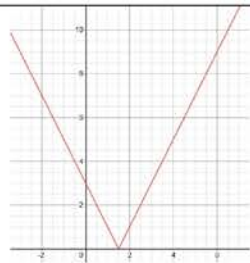


4



M1

1.1

$y = 2x - 3$ correct in first quadrant; may be implied by reflection or by A1

M1

1.1

reflection of their straight line to form V shape for positive y only

A1

1.1

symmetrical V shape through $(0,3)$ with vertex at $(1.5, 0)$; points may be identified from numbered scale or written separately

condone branches of different lengths

[3]