

4 In this question you must show detailed reasoning.

A curve has equation  $y = x - 5 + \frac{1}{x-2}$ . The curve is shown in Fig. 4.

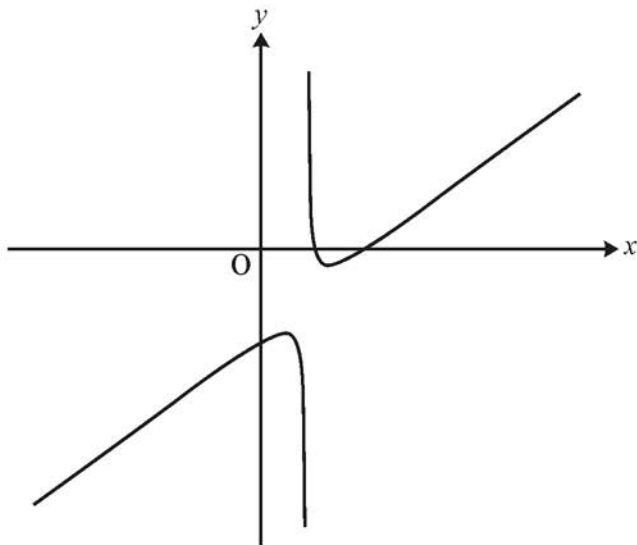


Fig. 4

- (i) Determine the coordinates of the stationary points on the curve. [5]
- (ii) Determine the nature of each stationary point. [3]
- (iii) Write down the equation of the vertical asymptote. [1]
- (iv) Deduce the set of values of  $x$  for which the curve is concave upwards. [1]